

Foundations for wellbeing

Reconnecting housing and public health

Dr Emily Tweed

On behalf of the ScotPHN advisory group

14th March 2018

About ScotPHN

Remit

Knowledge exchange and partnership working across public health in Scotland, including undertaking specific projects where there is national need

Membership

Open to anyone in Scotland who has a professional interest in the public health agenda

www.scotphn.net



ScotPHN is hosted by **NHS**
Health
Scotland
healthyliving

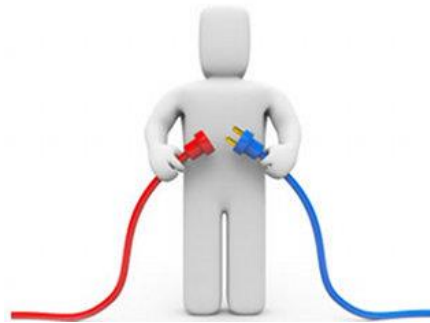
Why housing – and why now?

- Challenges – old and new
- New momentum
- New windows of opportunity



Aim of project

“To develop a ‘best practice resource’ to guide the public health and housing sectors in Scotland in their role in improving health and reducing inequalities through the provision of good housing, in the broadest sense”



ScotPHN is hosted by **NHS**
Health
Scotland

healthyliving



Society of Chief Officers
of Environmental Health
in Scotland

Scottish Health Promotion
Managers



Scottish Health Impact Assessment Network

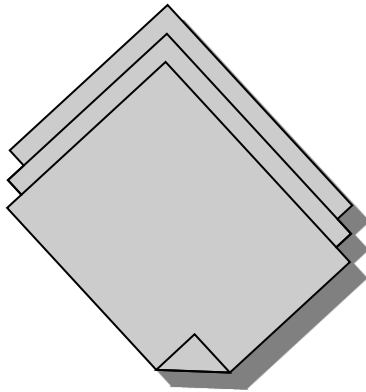
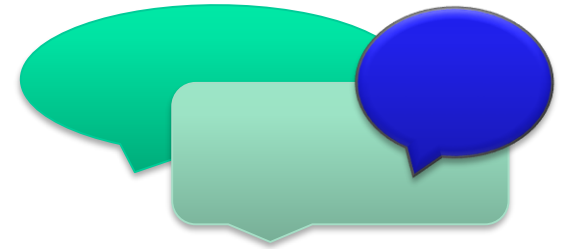
Public health staff from
5 territorial NHS boards



Methods

Stakeholder engagement

- Workshops with project advisory group
- Meetings with key informants
- Case studies of best practice

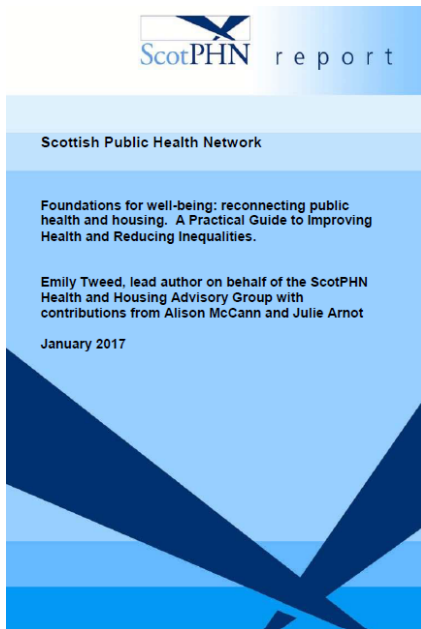


Rapid literature review

- Links between housing and health
- Sources of data
- Tools and resources to support joint working

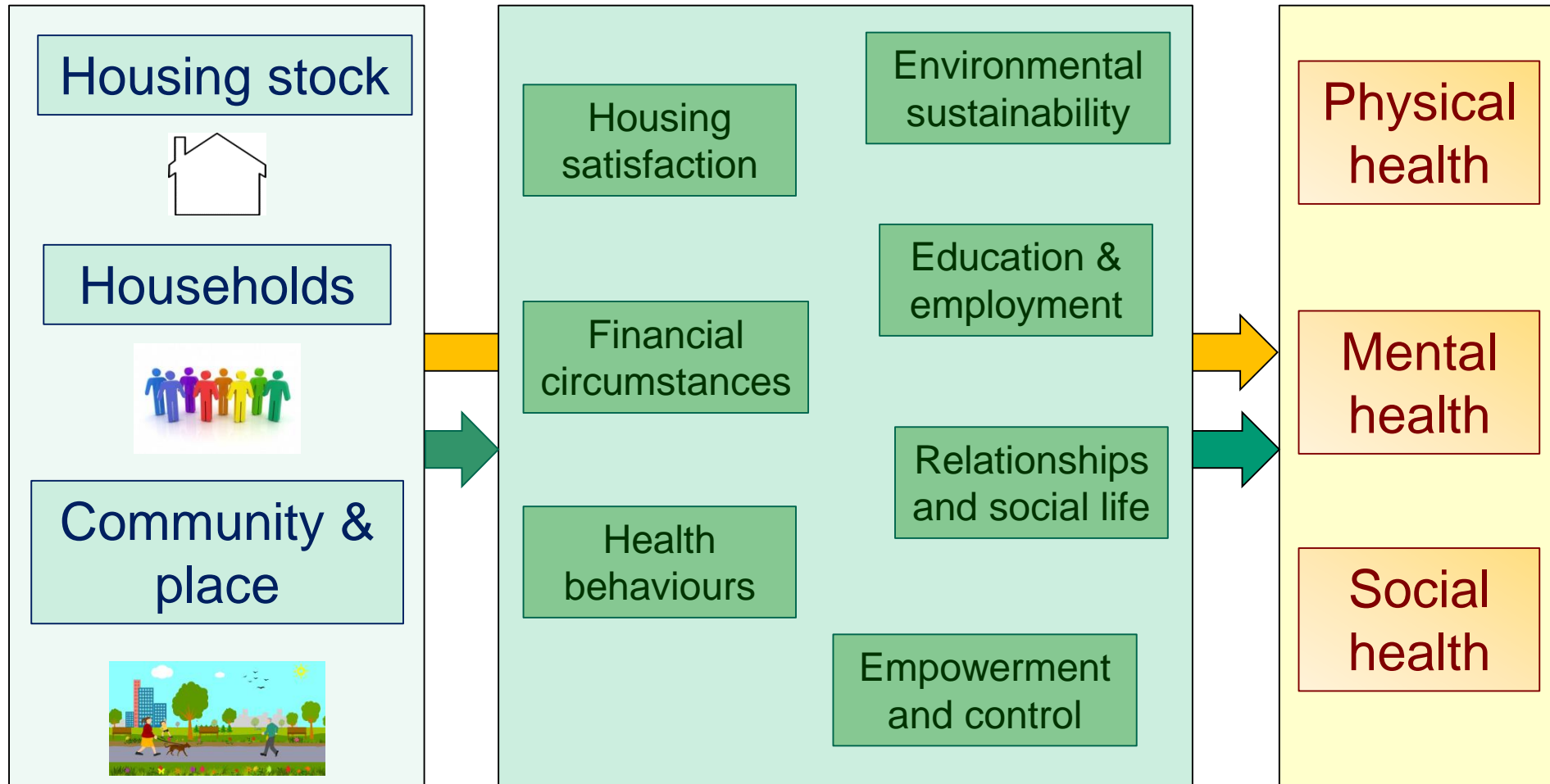
Report – Foundations for Wellbeing

<http://www.scotphn.net/projects/health-and-housing>



Produced by ScotPHN
and cross-sectoral Advisory Group

Conceptual overview



Report includes:

- Research briefings
- ‘Rough guides’ to housing and public health
- Existing tools, resources, case studies
- Key practice points

Opportunities for joint working

- Sharing our strengths
- Mutual priorities
- Key practice points

Relationships and collaboration

- Establishing and strengthening local relationships
- Building expertise within teams
- Joint events and embedded training
- Use of existing tools and resources

A lifecourse approach

- Lifecourse considerations as explicit focus – e.g.
 - Childhood and family experience
 - Demographic trends
 - Housing as setting of care

Local intelligence and context

- Sharing intelligence
- Who is most vulnerable – or most likely to benefit?
- Areas of challenge

Strategic planning

- Public health input to key forums/processes
 - Local Housing Strategies
 - Housing Contribution Statements
 - Local/Strategic Development Plans
- Championing housing's contribution in other contexts
 - Community Planning and LOIPs
 - Justice, alcohol/drugs, mental health, resilience...

Settings for intervention

- What are the opportunities to collaborate on:
 - Work on housing in health settings
 - Work on health in housing settings
 - Research and evaluation
 - Other projects...

National developments

- Health Impact Assessment of 50,000 new affordable homes

<https://tinyurl.com/HIAhousing>

- Forthcoming homelessness and health data linkage report
- Forthcoming 'Hard Edges' report
- Homelessness and Health conference, 29th March

Thanks to:

- Project Advisory Group
- Phil Mackie, Ann Conacher, Tim Patterson, Alison McCann, Julie Arnot
- All who submitted case studies or participated in engagement



Other resources

NHS Health Scotland – Health and Housing website section

HIA of 50,000 new homes - <https://tinyurl.com/HIAhousing>

ScotPHO > Life circumstances > homelessness

Forthcoming ScotPHO section on housing...