



Susan Robertson  
Communications Officer  
GCVS Policy & Engagement Team



Glasgow City Council Child Poverty Programme &  
No Wrong Door Glasgow



# What is a TSI? Who is GCVS?

**Scotland's network of Third Sector Interfaces (TSIs) was established in 2011. Funded by the Scottish Government, TSIs aid the development of voluntary and community organisations, social enterprises and volunteering.**

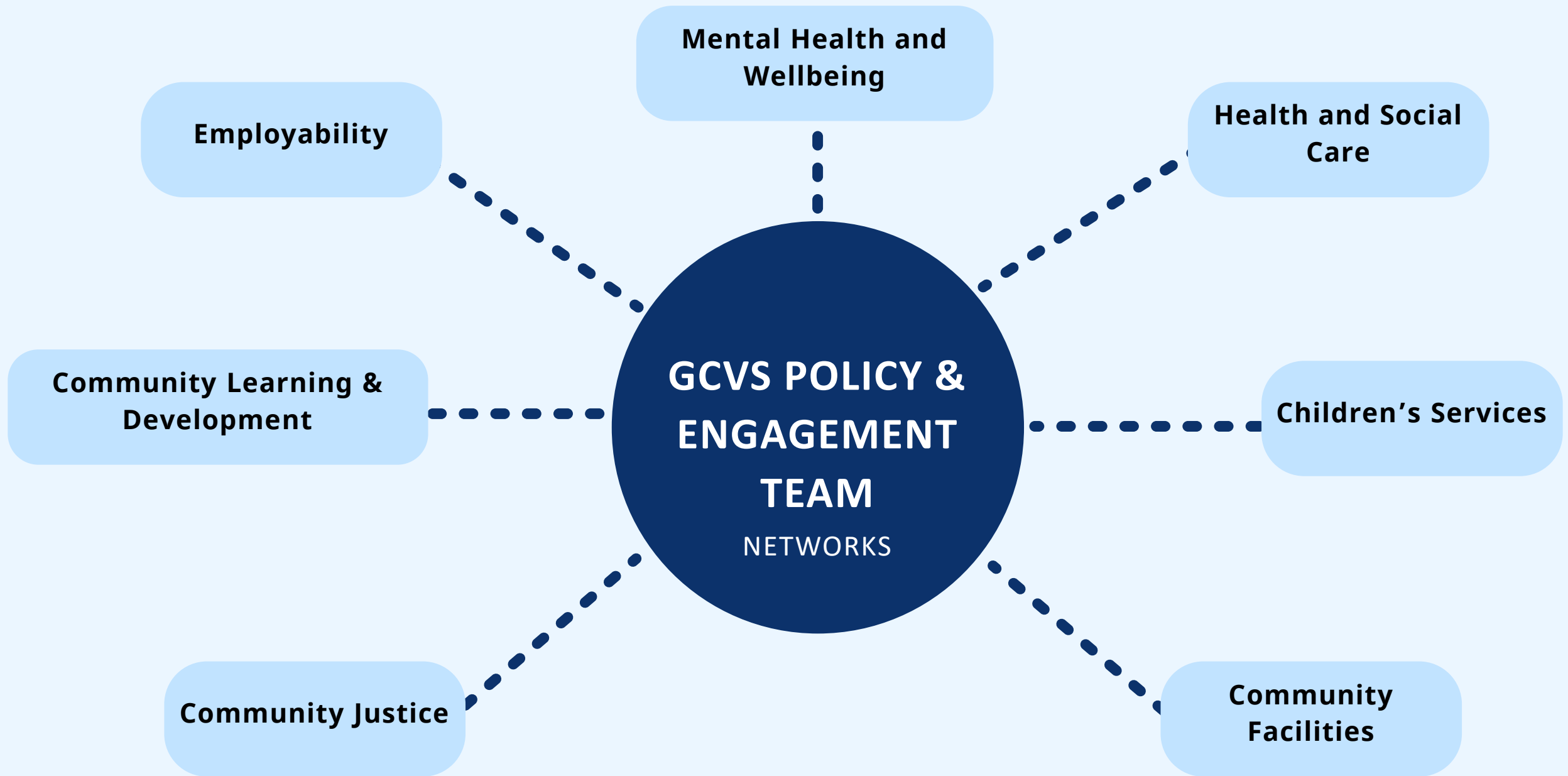
**TSIs provide a vital link between the third sector and community planning.**

**GCVS supports community groups, voluntary organisations, charities and social enterprises in Glasgow with the help, advice and training they need to succeed. By strengthening our voluntary sector, both citizens and communities benefit.**



## 5 Key areas of Policy and Engagement work:





# The Purpose of Representation

**Third sector is  
connected to  
local  
partnerships**

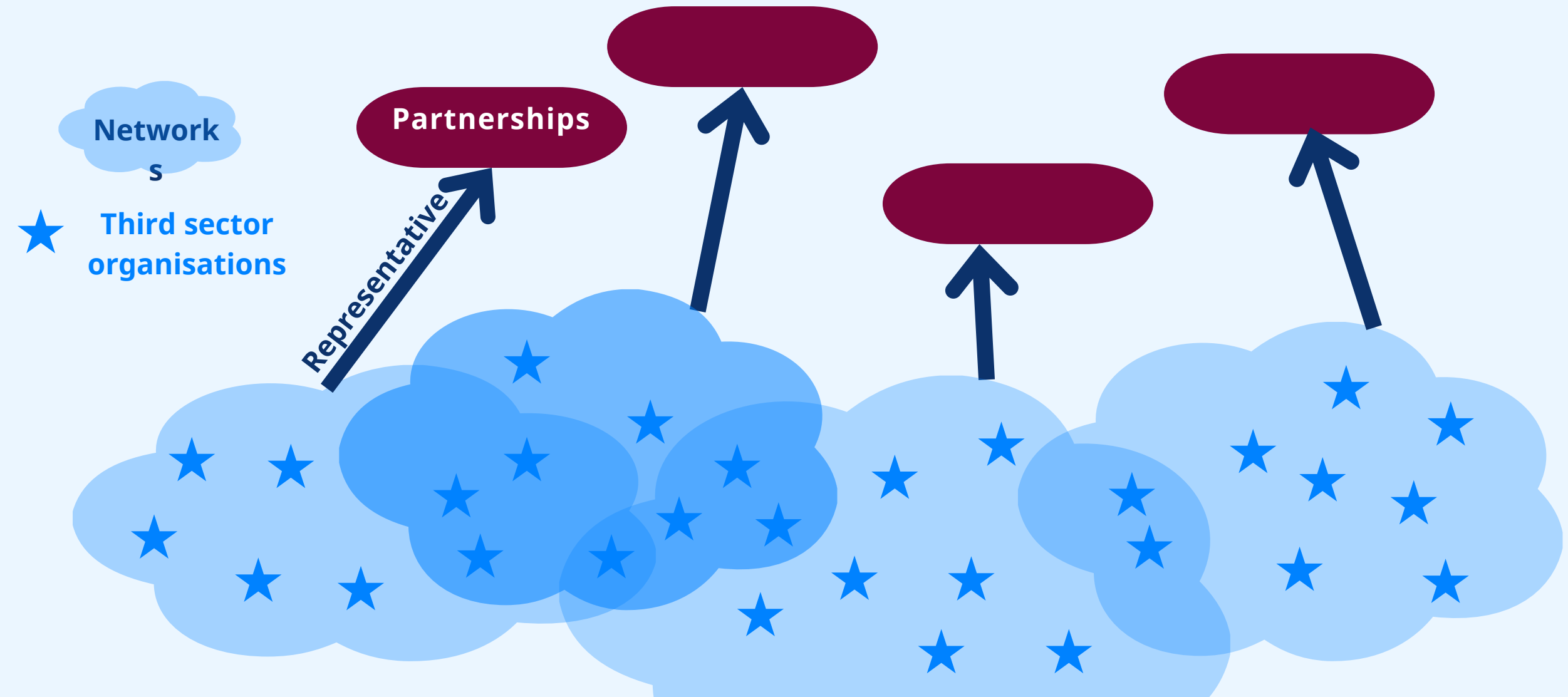
**Better  
understanding  
of the sector**

**Better  
decisions**

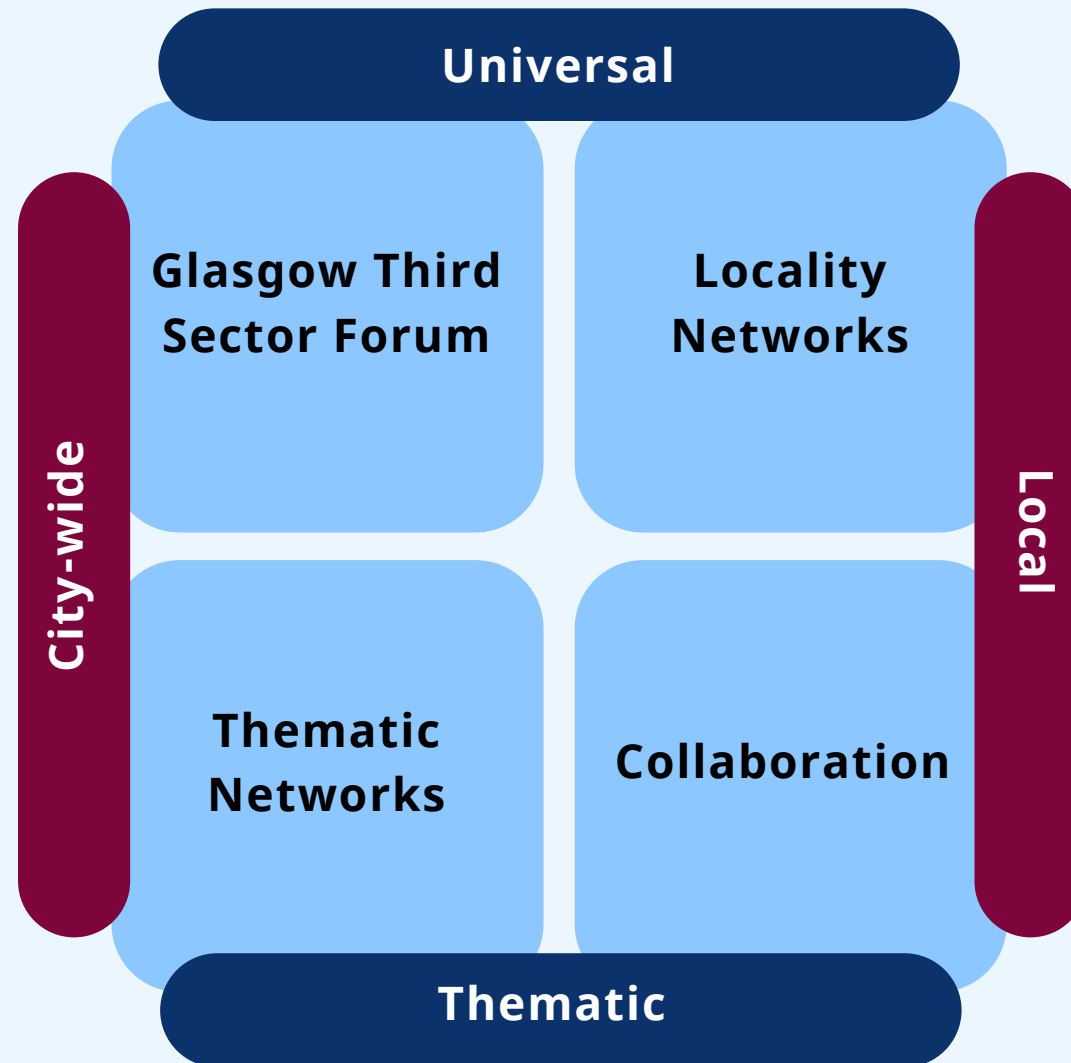
**Improved  
services and  
resource  
allocation**

**Better  
outcomes for  
citizens**

# Connecting the third sector to local partnerships: what does this look like?



# Routes to representation





**Imagine a system** where, no matter where someone first asks for help, they get the support they need from a supportive network of services offering the **right help**, in the **right place**, at the **right time**.



# Where have we come from?



2011

The Christie Commission established the standard for whole-system change, and this vision remains relevant today.

*“The goal must be nothing less than the substantial transformation of our public services and the prize is a sustainable person-centred system, achieving outcomes for every person in every city.”*



2017

The Scottish Government set ambitious targets to tackle child poverty with the Child Poverty Act.



2019

Glasgow city partners developed a Glasgow Vision; a shared ambition to create real change across its people and places by reshaping how collective resources are used more effectively, ensuring parity across citizens, communities, the city, and its partners.



2022

Improvement Service organised three workshops with representatives from the Scottish Government, Glasgow City Council, and cross-sector organisations invested in family support. These sessions aimed to understand the current successes and barriers to effective delivery of Child Poverty interventions in Glasgow, before guiding participants to consider and articulate what must be done to remove barriers locally and nationally.



# Workshop Reflections

**Community** - Interventions are often best delivered in a safe and secure environment with a local understanding and meaningful relationships.

**Communication** - The 'system' is a busy landscape. Individuals and organisations alike find it tricky to navigate.

**Timing** - Building relationships takes time. Many interventions are long-term and more difficult to measure.

**Prevention** - After a crisis point, families seek to build resilience. They need a suite of long-term interventions that they'll utilise over that period.

**No Wrong Door** - The concept of No Wrong Door was mentioned numerous times as a possible mitigation to the system's complexity.

# Plans to Tackle Child Poverty in Glasgow

The Community Planning Partnership (GCPP) updated the Local Outcome Improvement Plan (LOIP) to make family poverty a central focus.

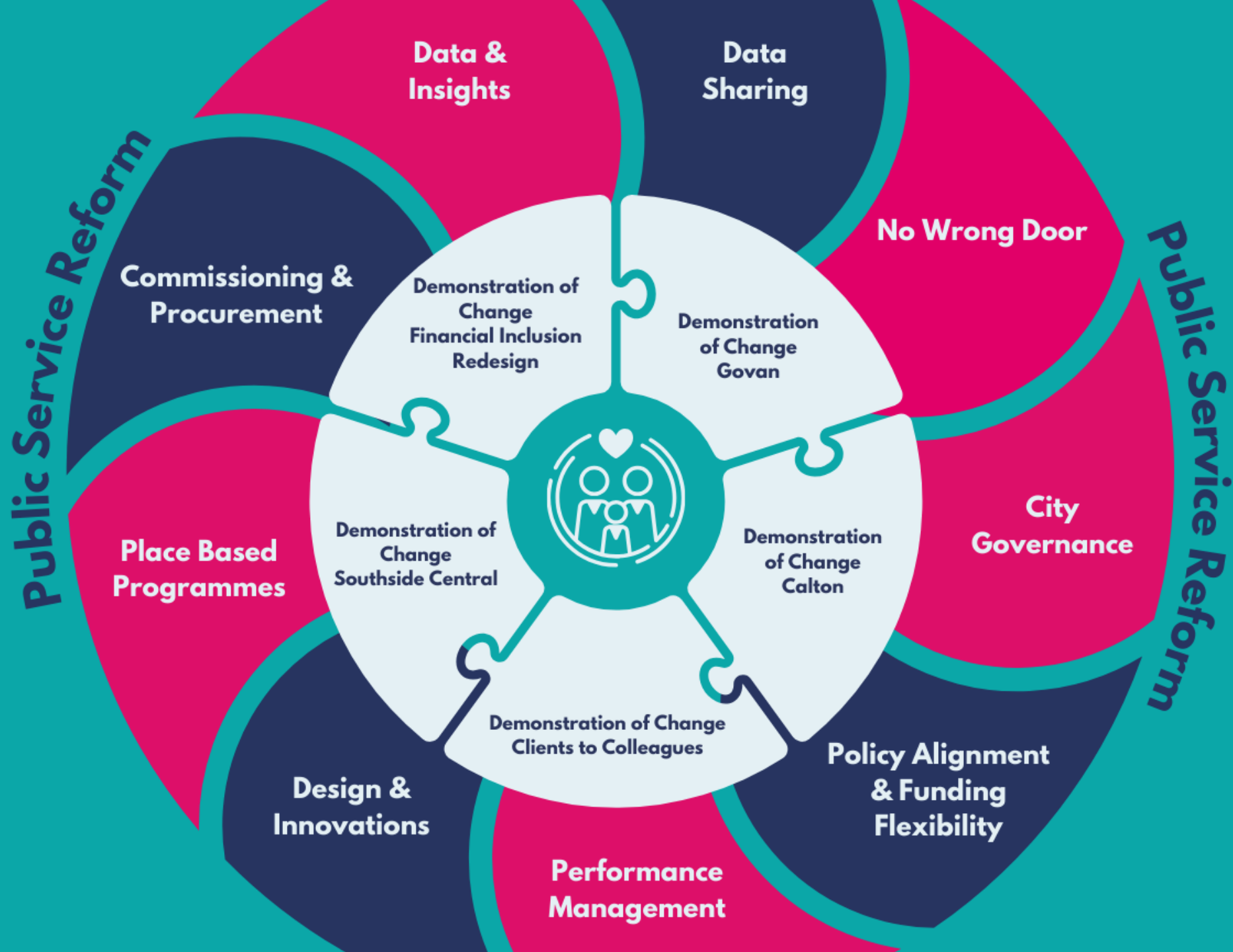
Glasgow City Council has reaffirmed its commitment to addressing child poverty in its strategic plan for 2022 to 2027.

The Integrated Children's Services Plan highlights tackling child poverty as a key priority.

## From Pathfinder to Programme

Since its formation in 2022, the Child Poverty Pathfinder has developed into a Programme that aims to:

- Reduce levels of child poverty by lifting families out of poverty as well as undertaking both preventative and early intervention activities underpinned by holistic, person-centred support.
- Demonstrate the benefits of a public service reform approach consistent with the Christie Principles.
- Illustrate the wider impact on families through improved user voice.





## Our Vision

A system where, no matter where someone first asks for help, they get the support they need from a supportive network of services offering the right help, in the right place, at the right time.

## Our Guiding Principles

To work in <b>partnership</b> to deliver better outcomes for families.	To place <b>people</b> at the heart of everything we do.
To operate <b>honestly</b> , building <b>trust</b> through clear communication and <b>accountability</b> .	To work towards <b>equality</b> and <b>inclusion</b> , where people receive the support they need regardless of their circumstances.
To deliver services with <b>compassion</b> , <b>understanding</b> , and <b>sensitivity</b> using a <b>strength-based</b> approach.	To champion <b>early intervention</b> and <b>prevention</b> , adapting to the changing needs of citizens.



# Roadmap to Success

Encourage cross-sector involvement

Overcome Data Protection & GDPR Restrictions

Co-develop a shared assessment tool

Understanding Early Intervention





**Be Part  
of the  
Change.**



**Become a member of  
No Wrong Door**