

**Travelling Green Poetry
 produced by Gavinburn
 Primary School, 2001 (NHS
 Greater Glasgow, West
 Dunbartonshire Council)**

Analysis of children's travel patterns

Bruce Whyte and Mark Livingston

Building the information base around modes of transport/travel

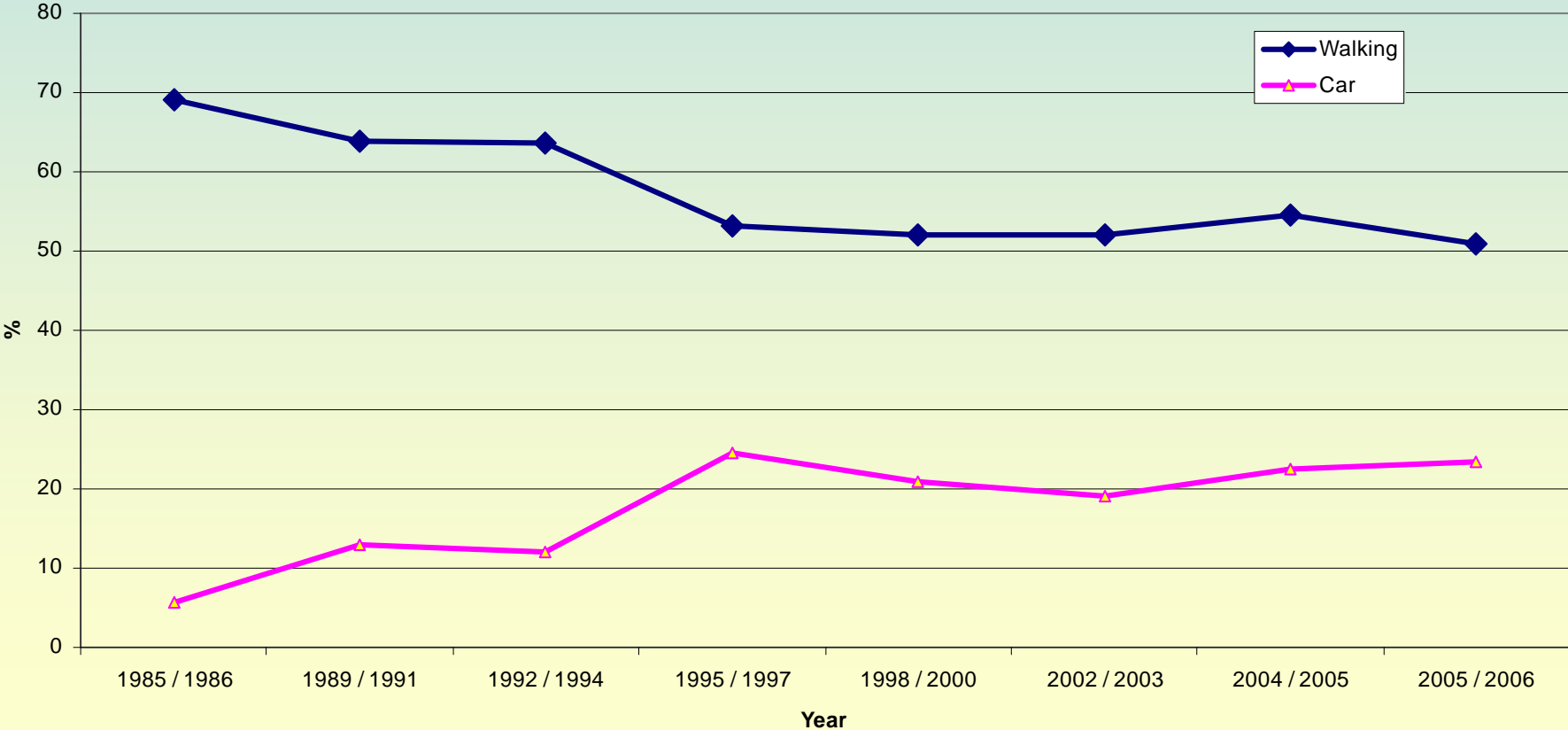
- Identifying sources of data e.g. local and national surveys, Census, casualty statistics, bus routes
- Analysing trends and patterns in travel by mode
- Main focus to date has been on children but moving on to look at adults' travel patterns
- Again a snapshot....

Analysis of children's travel patterns

- Travel to school
 - Hands up survey
- Child road accidents
 - Stats 19 (police recorded accident data);

Scottish trends for travel to and from school (Source : National Travel Survey)

Travel to and from school (pupils aged 5 to 16)



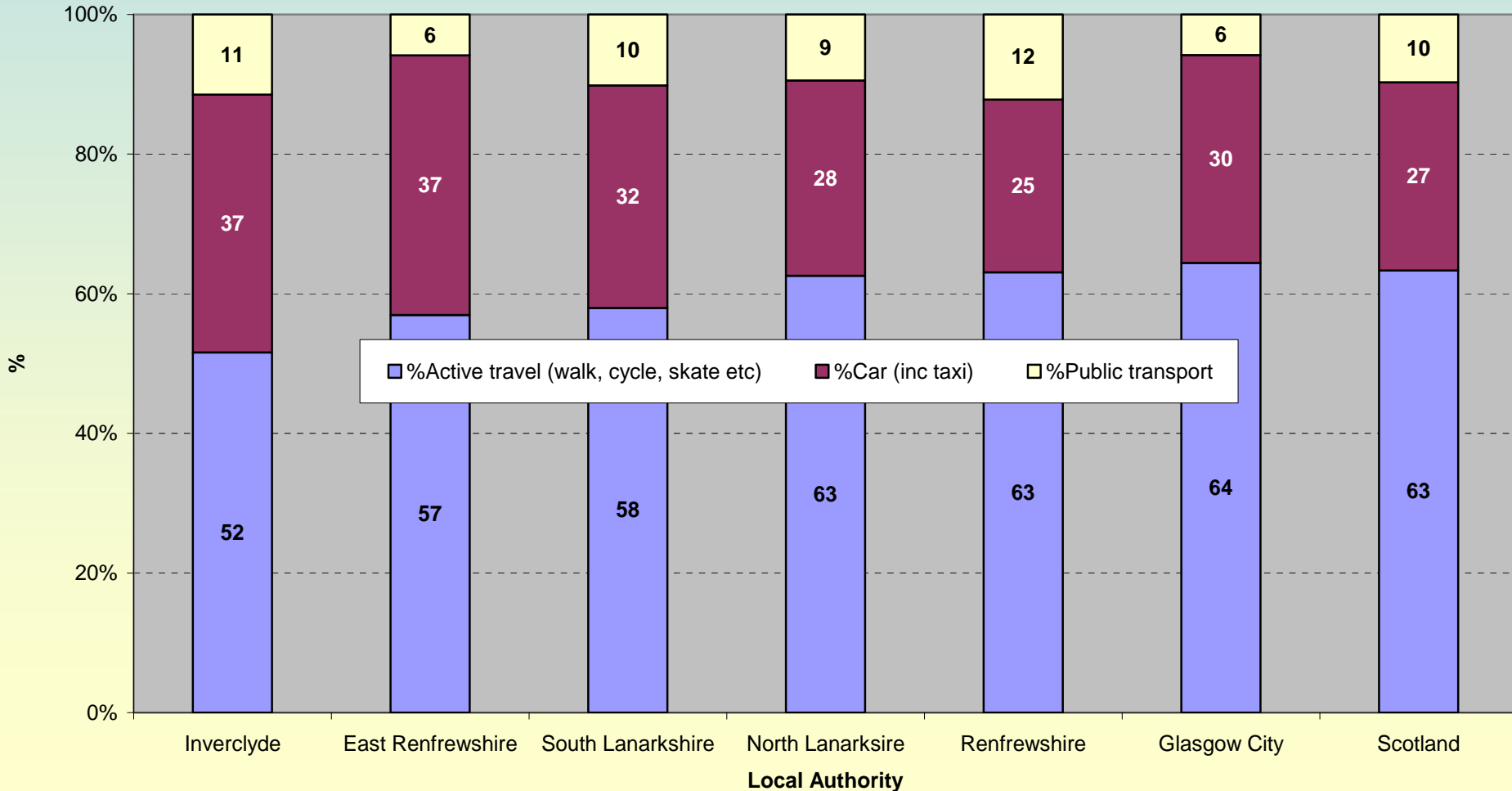
National Hands Up Survey

- Survey conducted by schools in Sept 2008 in 29 Local Authorities instructed by their School Travel Coordinator with support from Sustrans.
- One question is asked, 'How do you normally travel to school?'
- Covers primaries and secondary schools but not all schools in an authority take part.
- We do not identify any schools.
- We have defined active travel to include walking, cycling, skating and park and stride.
- Deprivation analysis is based on SIMD score of school rather than pupil catchment.

How does active travel to primary schools vary across Glasgow and Clyde Valley?

Primary School – Active travel by LA

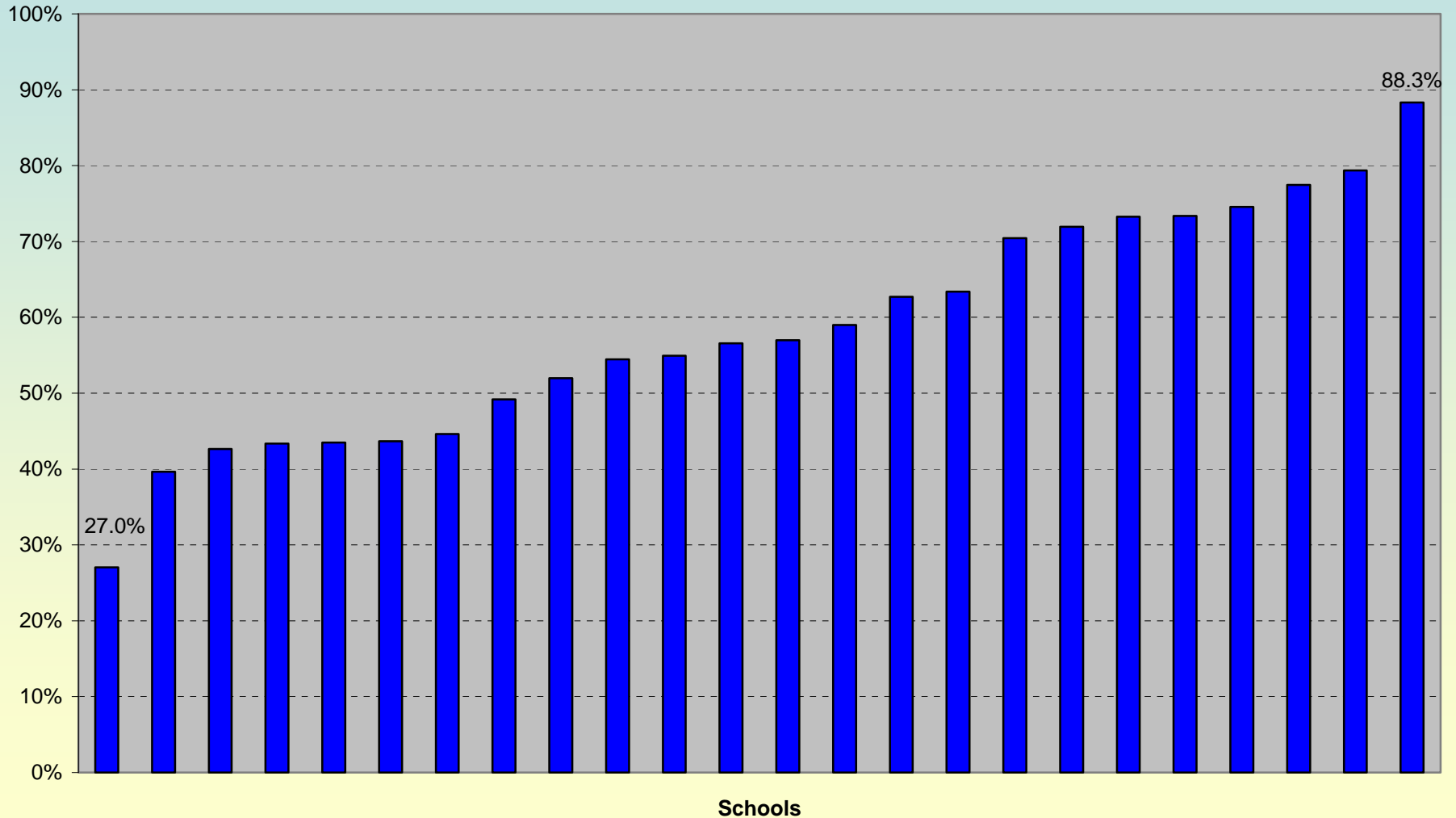
Active travel (i.e. walking, cycling, skating, 'park & stride') to primary school by Local Authority, Glasgow and Clyde Valley. Source: Hands Up, 2008



Is there much variation in active travel to primaries within local authorities?

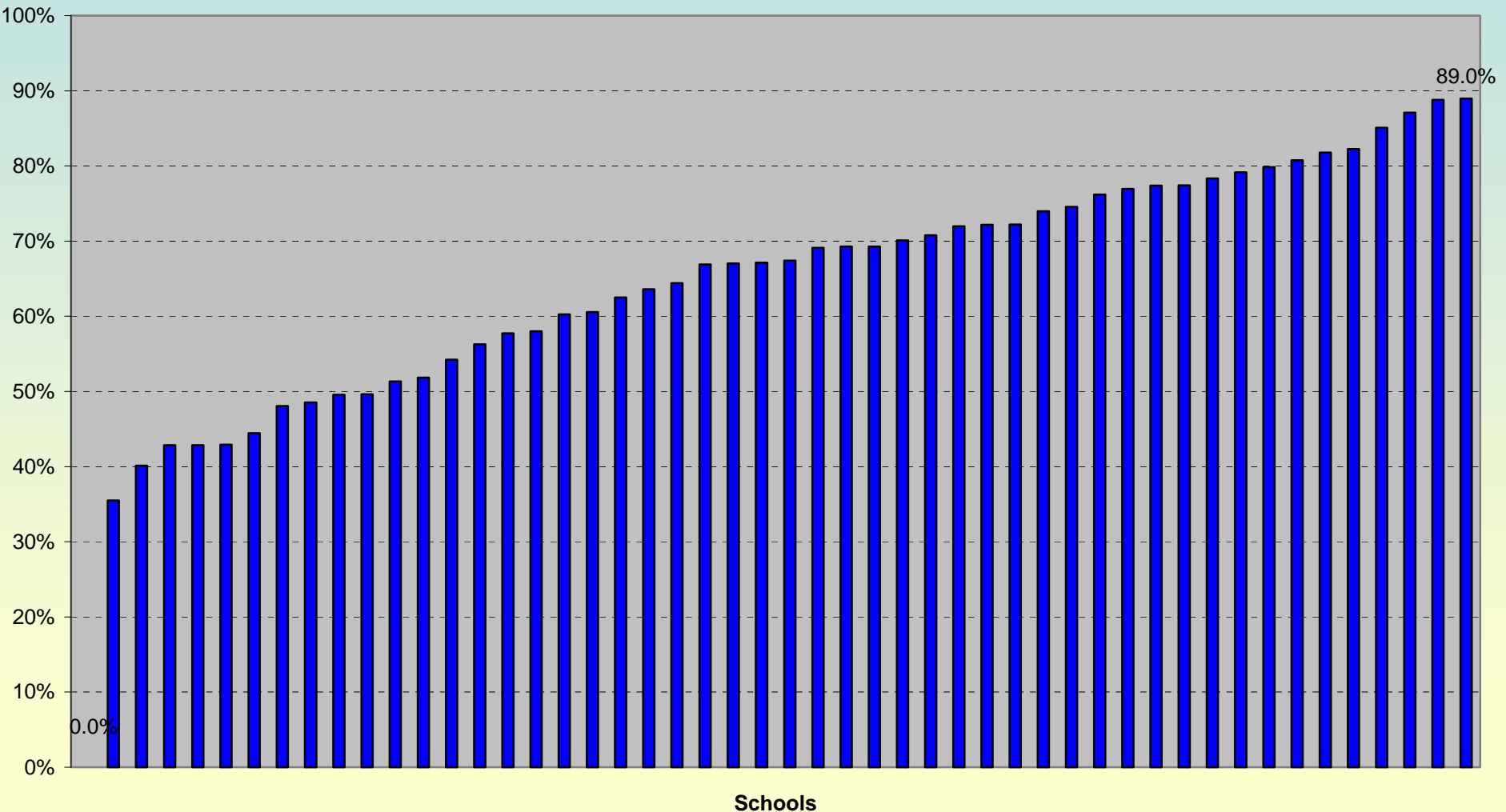
Primary School – Active travel within LAs

Active travel (i.e. walking, cycling, skating, 'park & stride') to primary school within East Renfrewshire Source: Hands Up, 2008



Primary School – Active travel within LAs

Active travel (i.e. walking, cycling, skating, 'park & stride') to primary school within Renfrewshire
Source: Hands Up, 2008

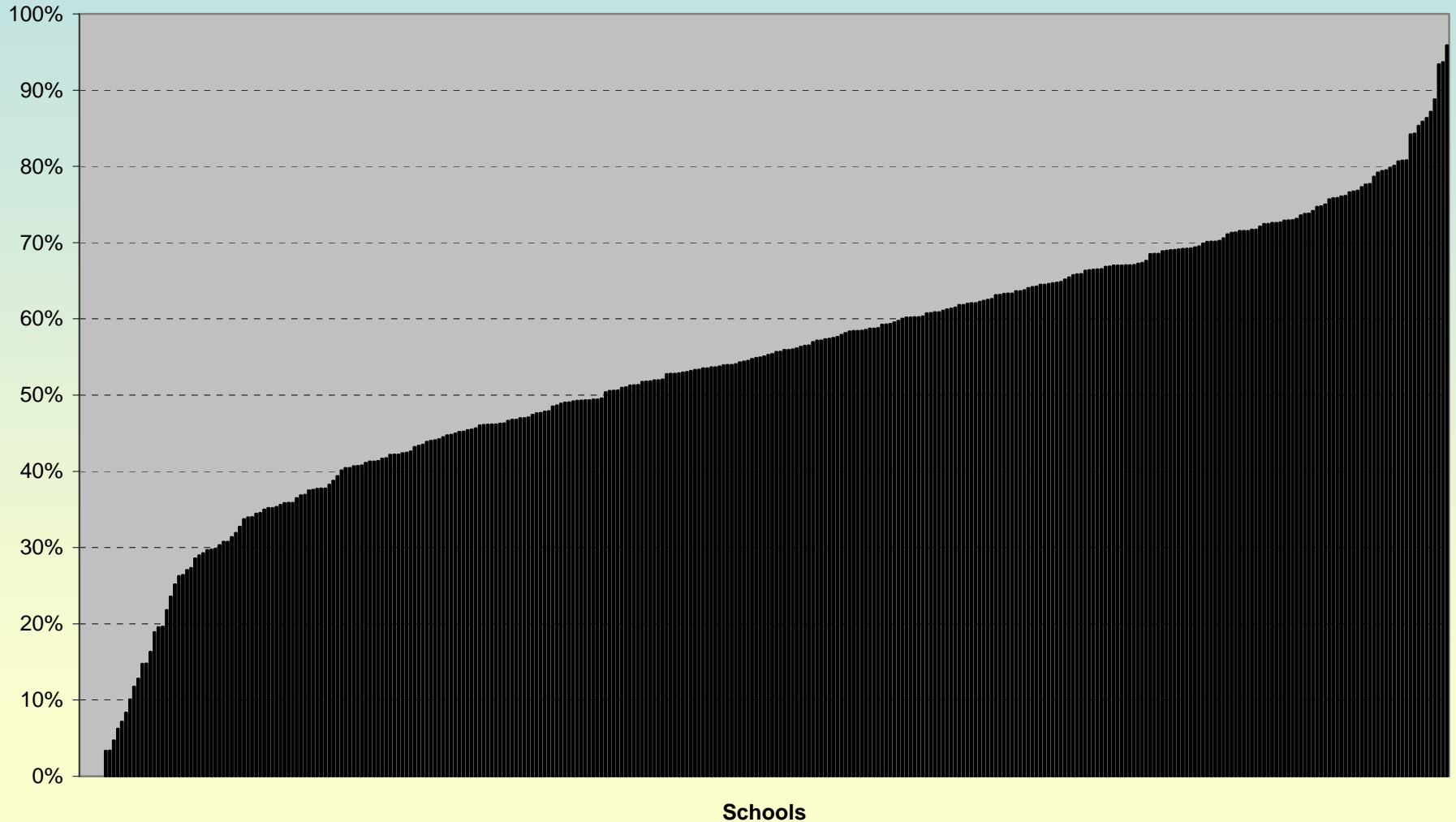


How much variation is there in different modes of travel to school across the region?

Walking to Primary School across region

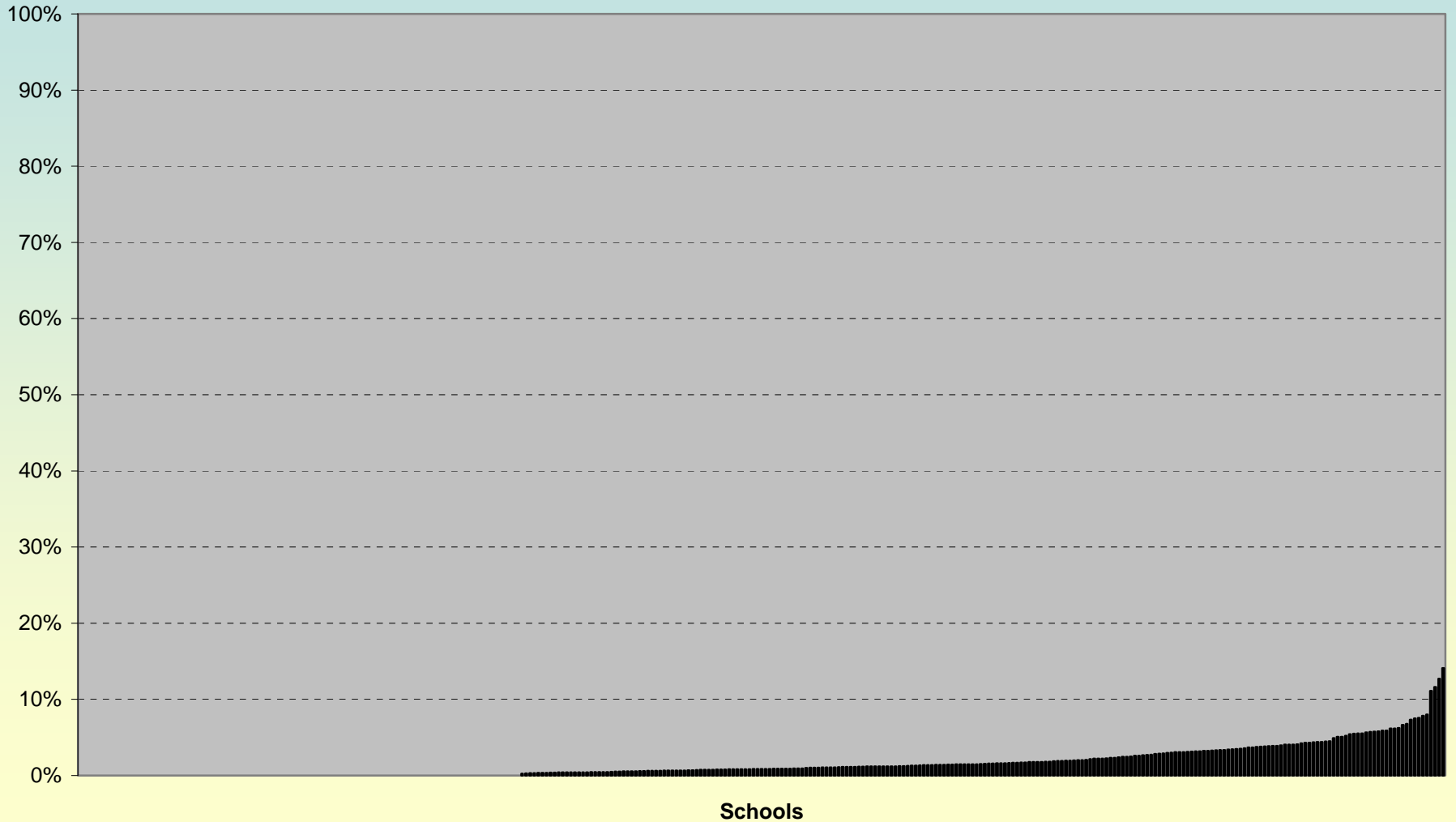
Walking to primary school within Glasgow and Clyde Valley

Source: Hands Up, 2008



Cycling to Primary School across region

Cycling to primary school within Glasgow and Clyde Valley
Source: Hands Up, 2008

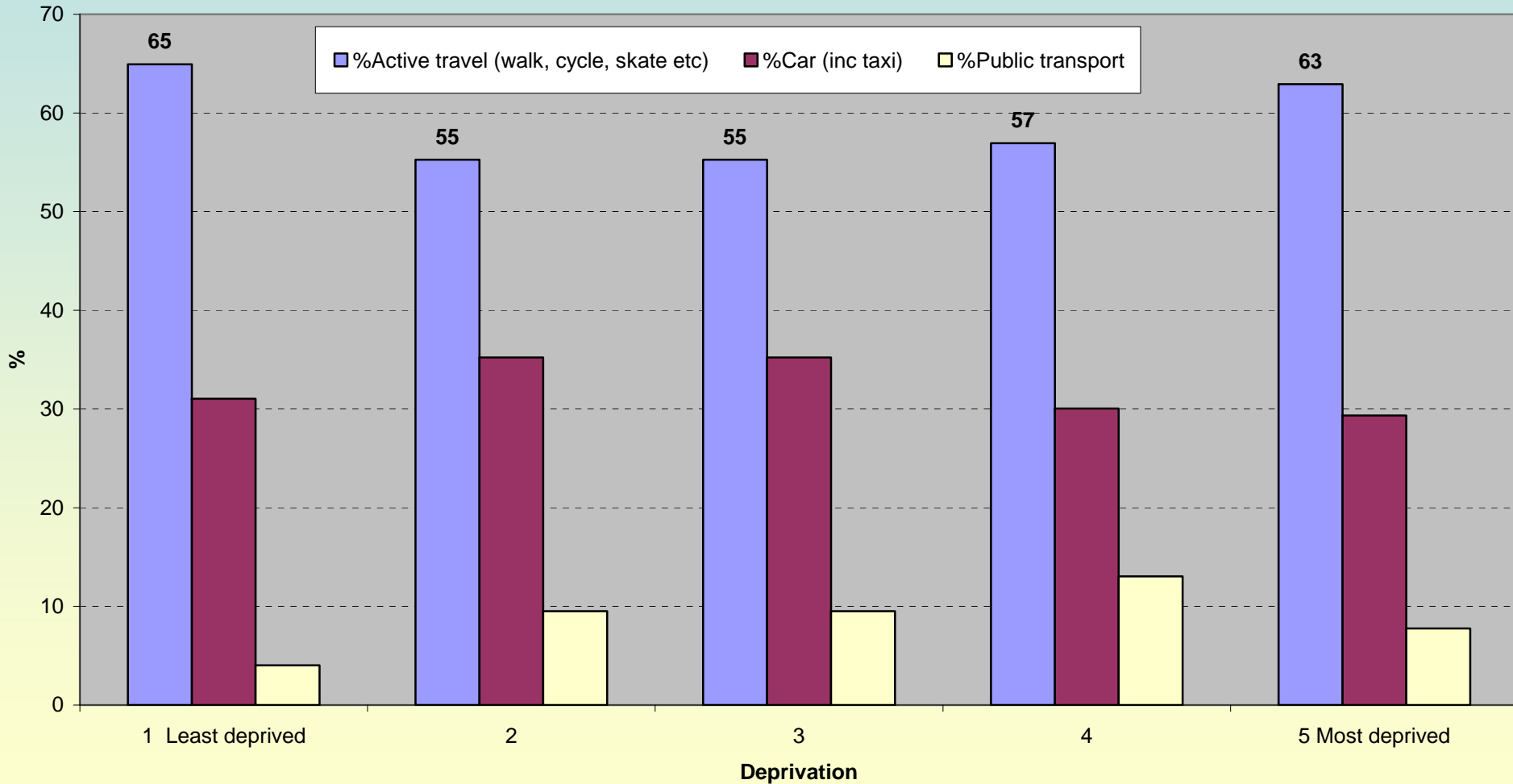


Does deprivation make a difference?

Primary School – Active travel vs. deprivation

Travel to Primary School in Glasgow and Clyde Valley by Deprivation

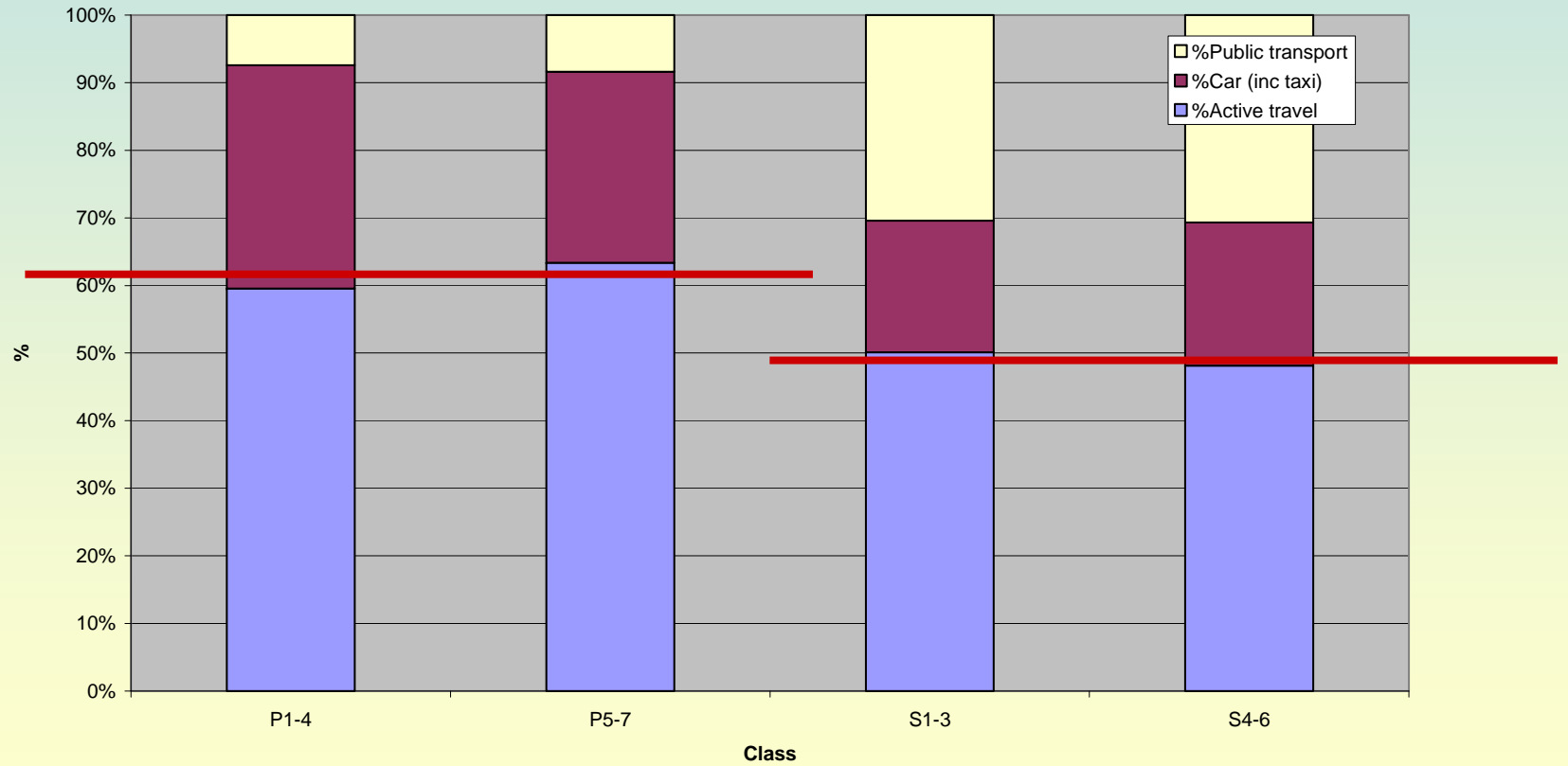
Source: Hands-up Survey, 2008



Do levels of active travel vary by age of pupil?

Active travel by age

Travel to school in Glasgow and Clyde Valley by pupil age group Source: Hands up survey

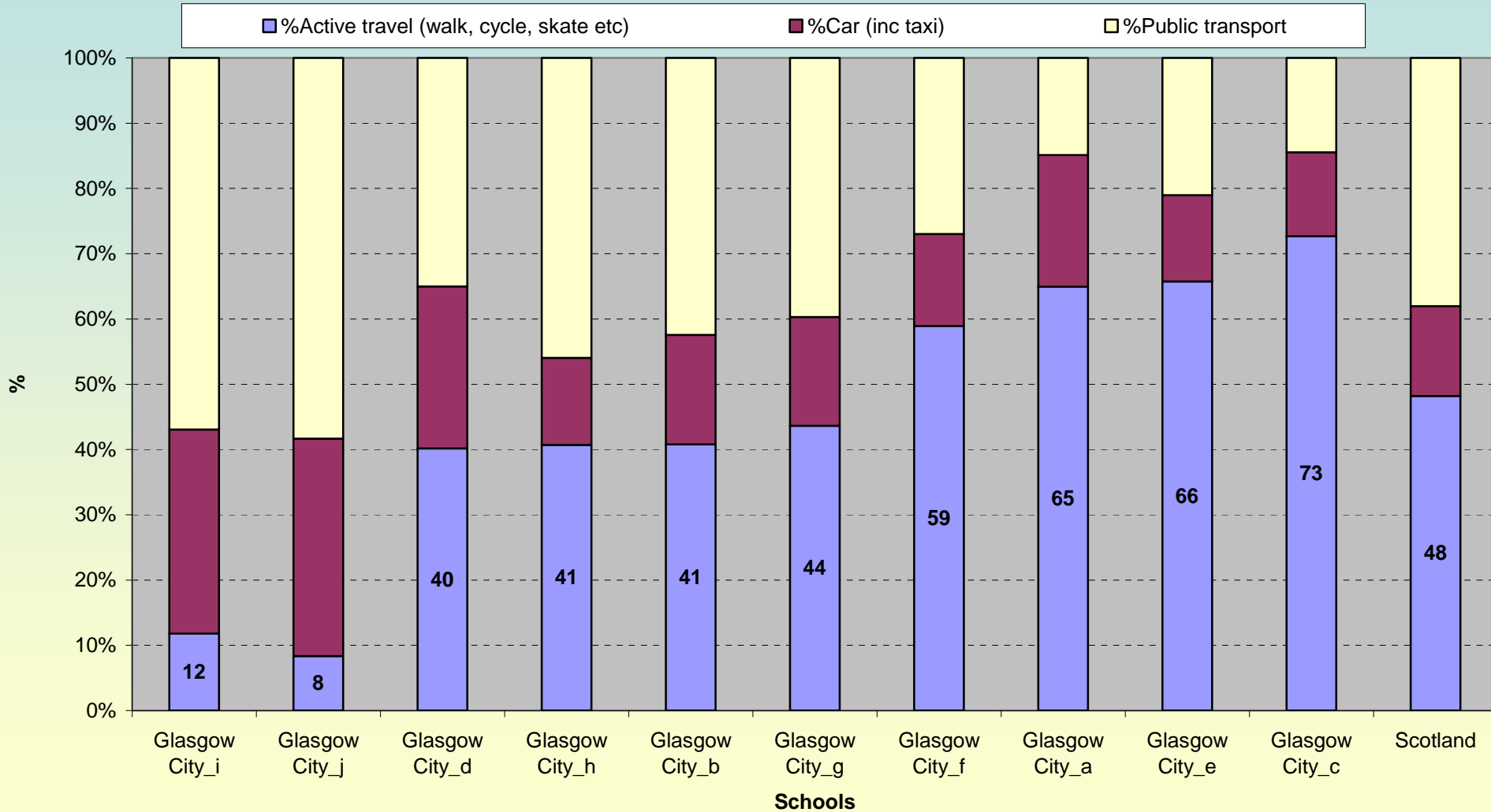


Is there much variation in active travel to secondary school within local authorities?

Active travel to secondary school within Glasgow

Active travel to Secondary School in Glasgow

Source: Hands-up Survey, 2008 (NB only 10 out of 30 secondaries took part in survey)

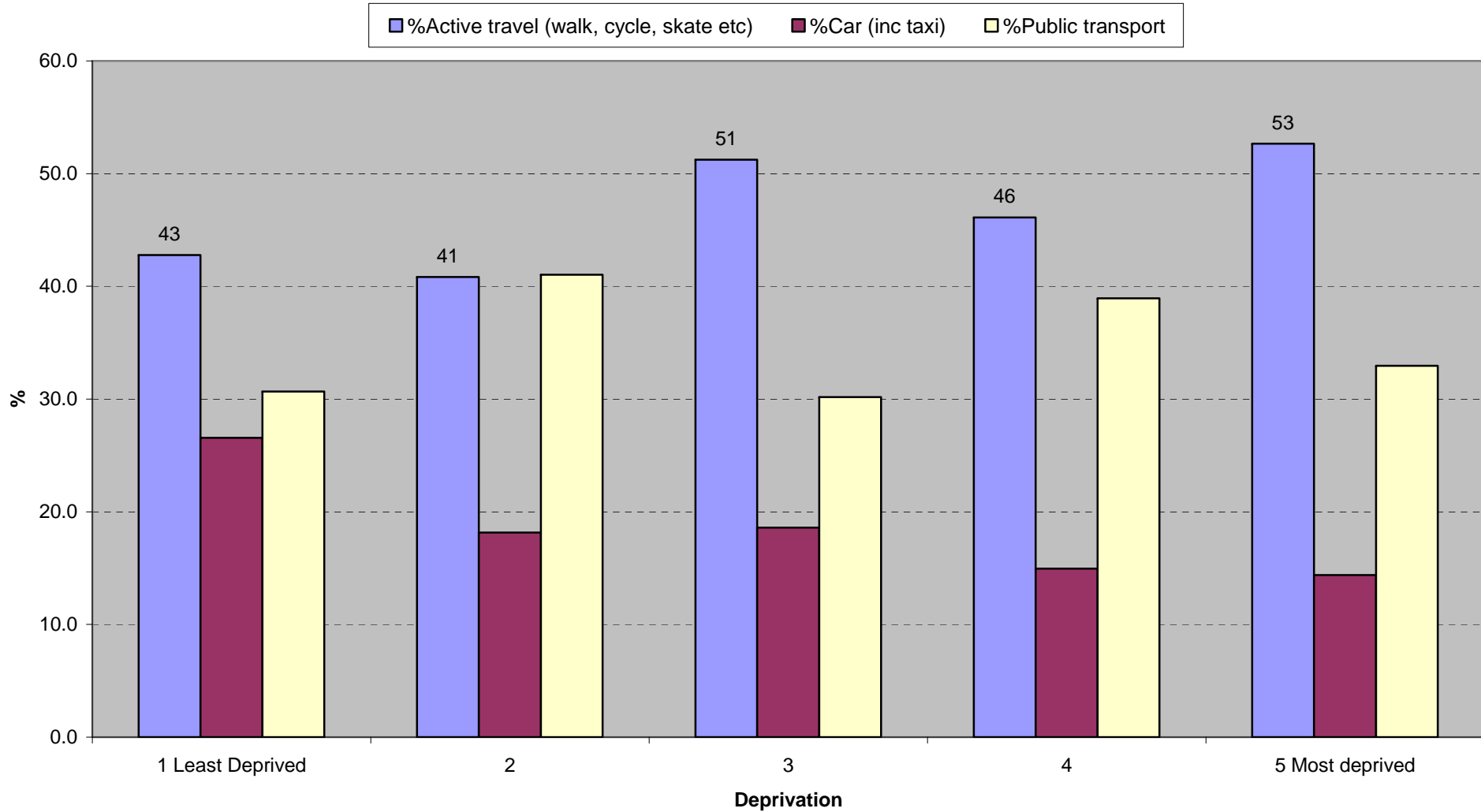


Does deprivation make a difference?

Active travel to school and deprivation

Travel To Secondary School in Glasgow and Clyde Valley by Deprivation

Source: Hands-up Survey, 2008

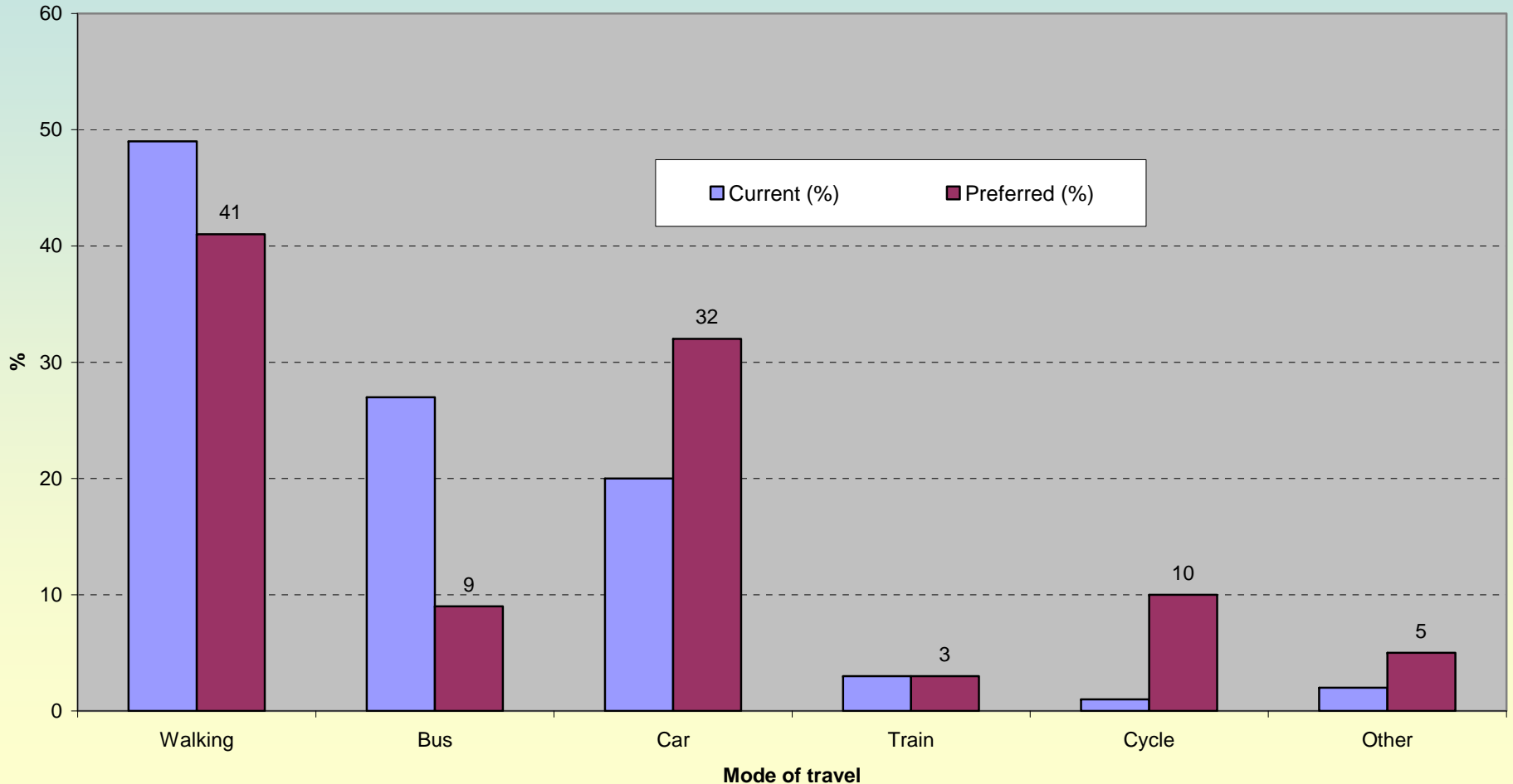


How do pupils prefer to travel to school?

Current and preferred methods of travel to school in Glasgow

Current and preferred methods of travel to school, S1-S4 Pupils in Glasgow

Source: Schools Survey of Health and Well-being of S1-S4 pupils in new Learning Community Schools in Glasgow, 2008

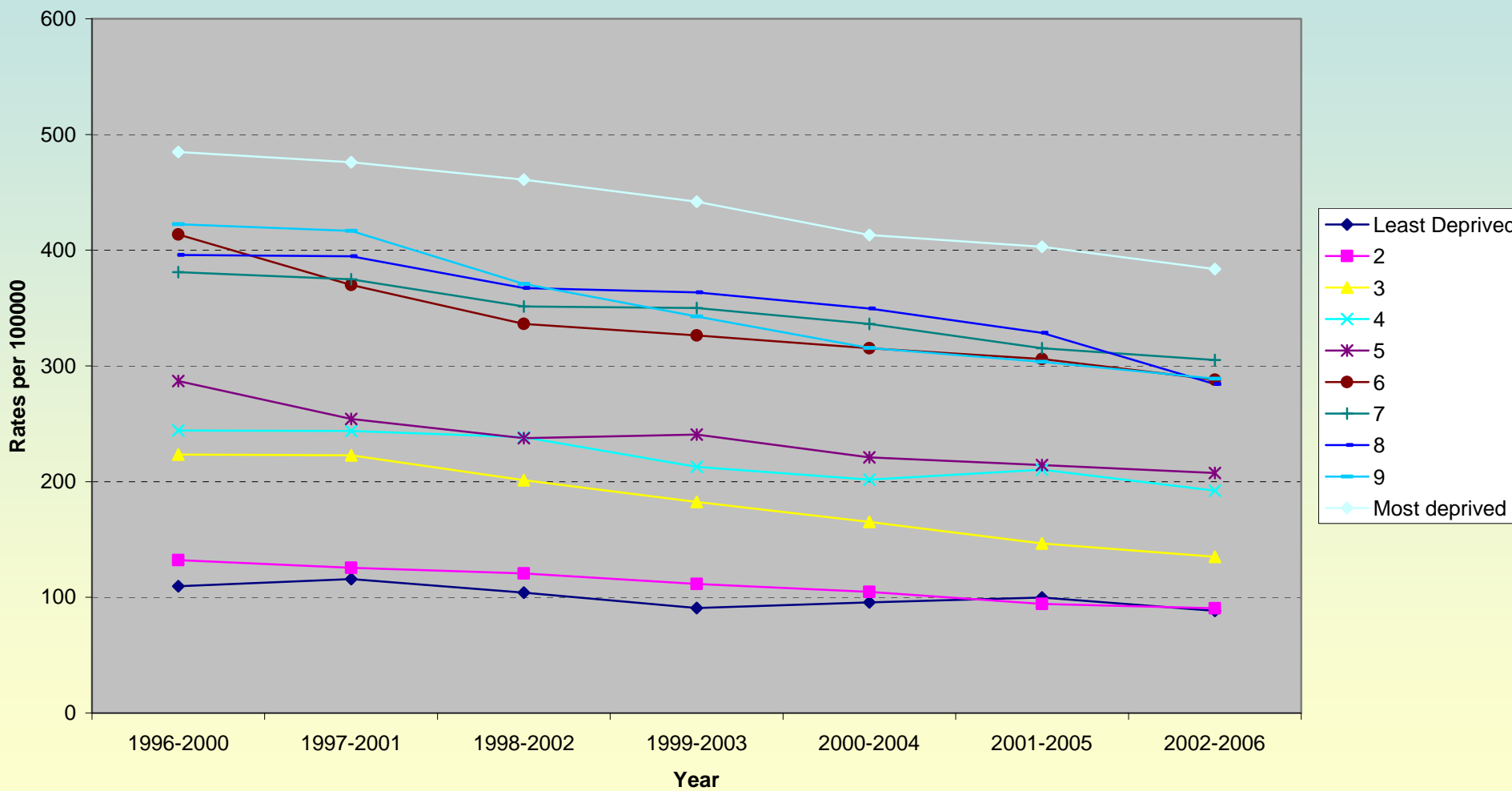


Do rates of child casualties vary by deprivation?

Child RTA Casualty trends by deprivation

Rates of pedestrian accidents by deprivation for 5-15 year olds in Glasgow and Clyde Valley

Source: Stats 19



Some preliminary conclusions

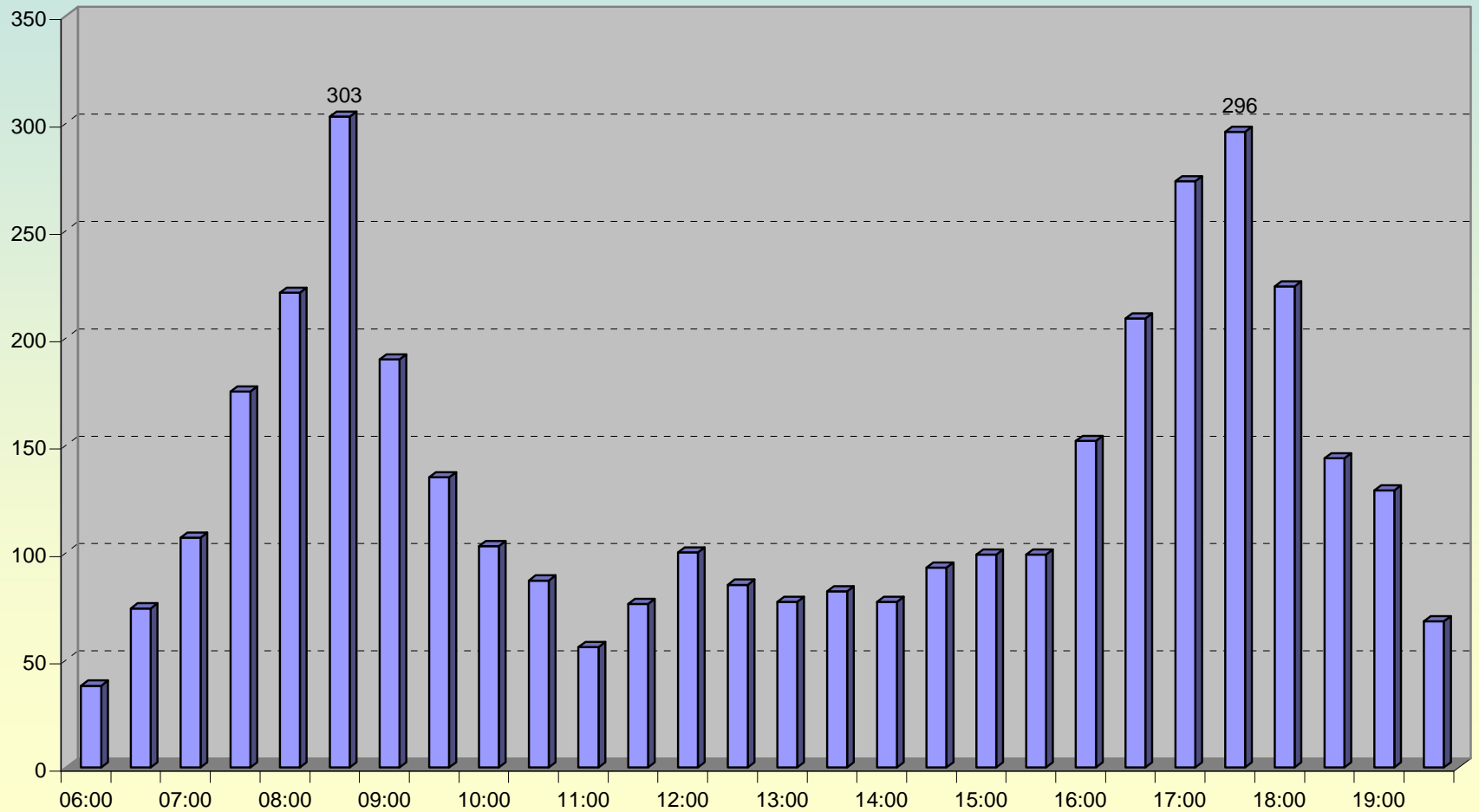
- Small variation in active travel between LAs
- Large differences between schools regionally and at LA level.
- Primary pupils more likely to use active travel than secondary
- Affluence/deprivation is important
- Secondary Pupil's (in Glasgow) prefer to use car (+11%) but also cycle more(+9%)
- Child road accident casualties falling in last 10 years but large differences between dep cats.

Other areas of analysis...

Cycling Commuting Counts

Cycle counts by time of day from 31 sites around Glasgow City Centre on Tuesday 24th June 2008

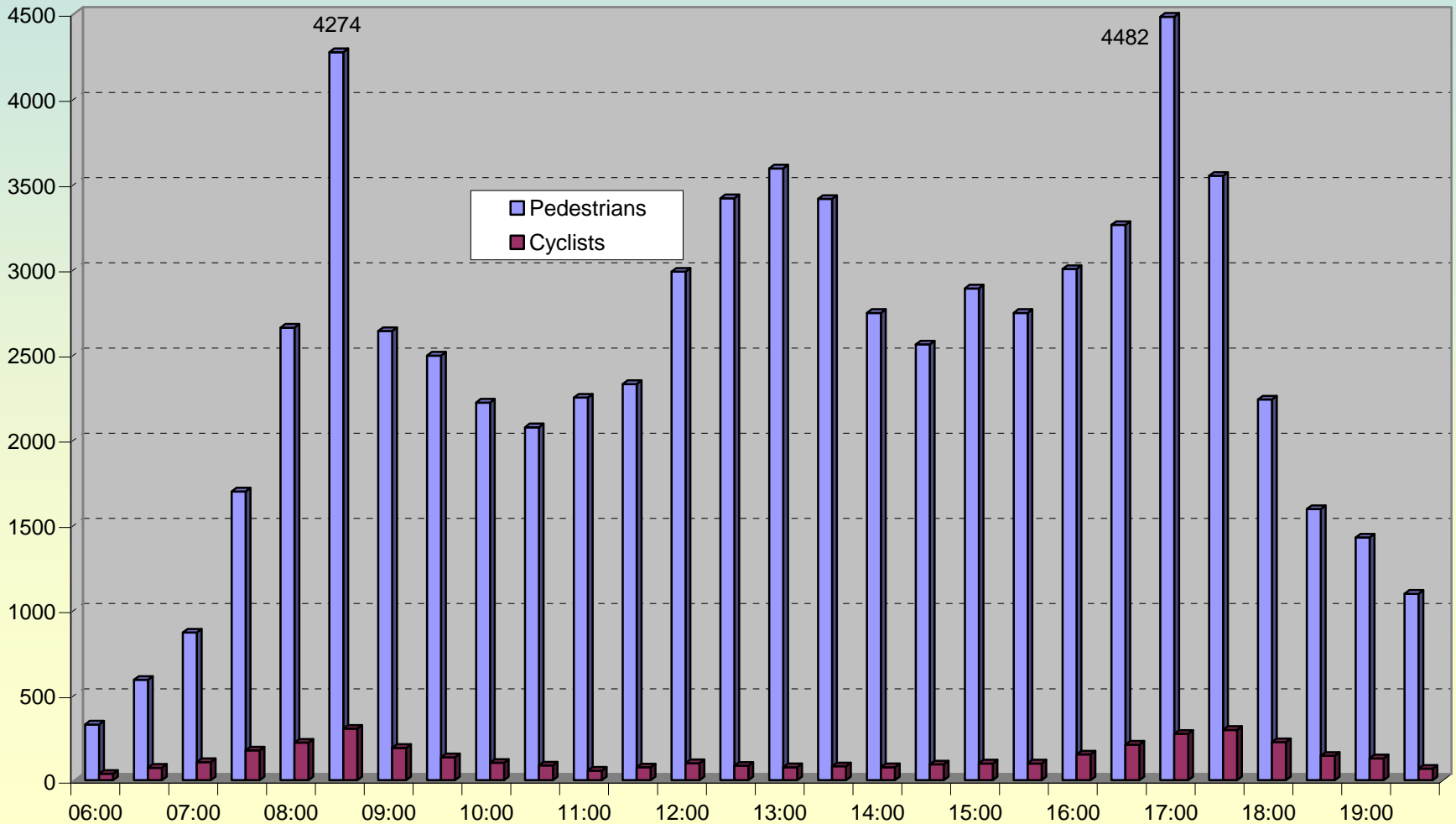
Source: Land & Environmental Services, Glasgow City Council



Cycling and Pedestrian Commuting Counts

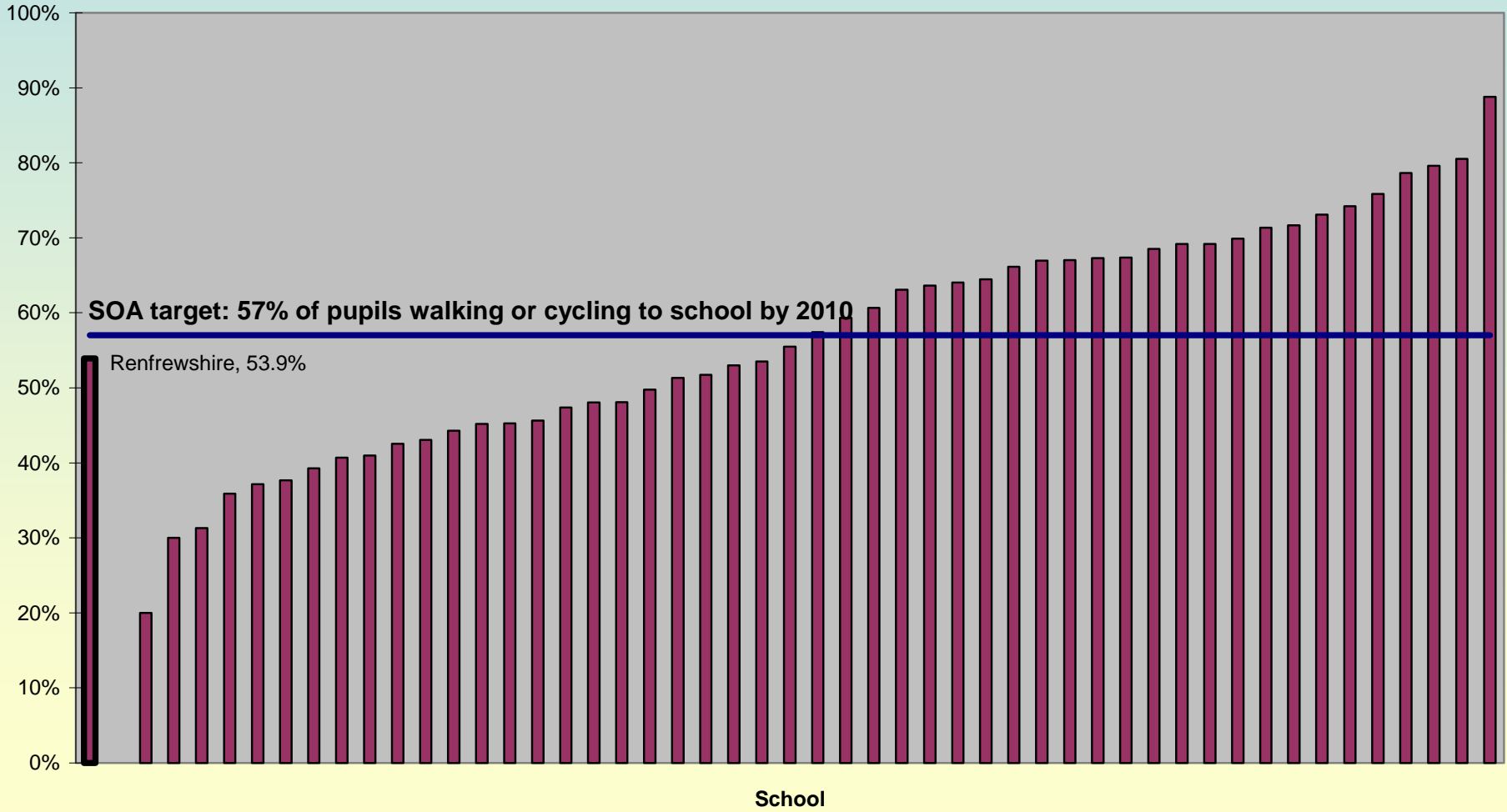
Pedestrian and cyclist commuter counts by time of day from 31 sites around Glasgow City Centre on Tuesday 24th June 2008

Source: Land & Environmental Services, Glasgow City Council



Can Hands-up help achieve targets?

Walking or cycling to primary school in Renfrewshire in 2008 compared to SOA target
Source: Hands-up Survey, 2008



Moving in the right direction?...to be continued



Programme Lead:

Fiona Crawford

Glasgow Centre for Population Health

Phone: 0141 287 6959

fiona.crawford@drs.glasgow.gov.uk

Other contacts:

Bruce Whyte, bruce.whyte@drs.glasgow.gov.uk

Mark Livingston, mark.livingston@drs.glasgow.gov.uk

Pete Seaman, pete.seaman@drs.glasgow.gov.uk

Web: <http://www.gcph.co.uk/activetravel>